



# Faculty & Staff

---

Facts & Statistics  
South Carolina State University

## FULL-TIME INSTRUCTIONAL FACULTY BY RANK

Fall 2006 – 2010

RANK	Fall 2006	Fall 2007	Fall 2008	Fall 2009	Fall 2010
Professor	31	39	39	45	45
Associate Professor	61	64	62	56	49
Assistant Professor	86	86	91	95	90
Instructor	25	26	32	33	32
Lecturer	0	0	0	0	0
<b>TOTAL</b>	<b>203</b>	<b>215</b>	<b>224</b>	<b>229</b>	<b>216</b>

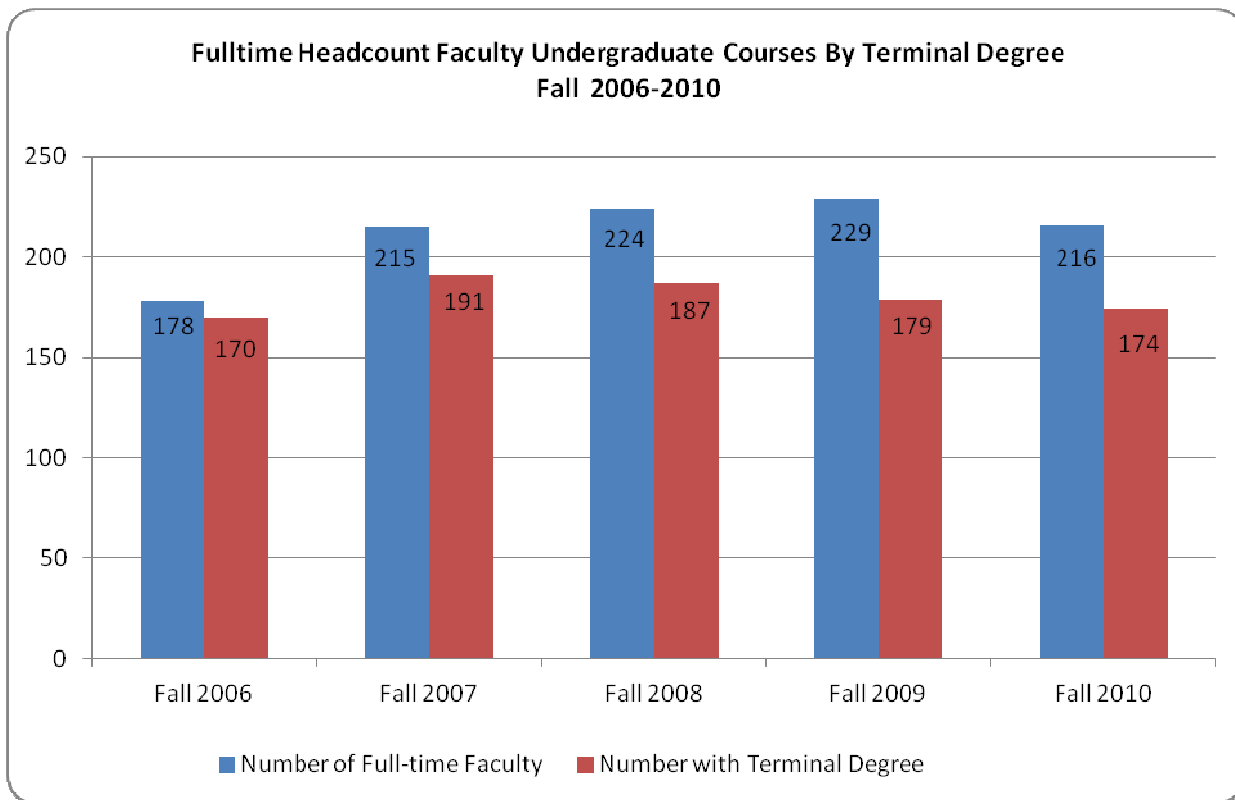


Sources: CHEMIS Comparison of Full-Time Instructional Faculty by Rank

**NUMBER OF FULL-TIME HEADCOUNT FACULTY TEACHING UNDERGRADUATE COURSES  
BY TERMINAL DEGREE IN PRIMARY TEACHING AREA**

**FALL 2006 – 2010**

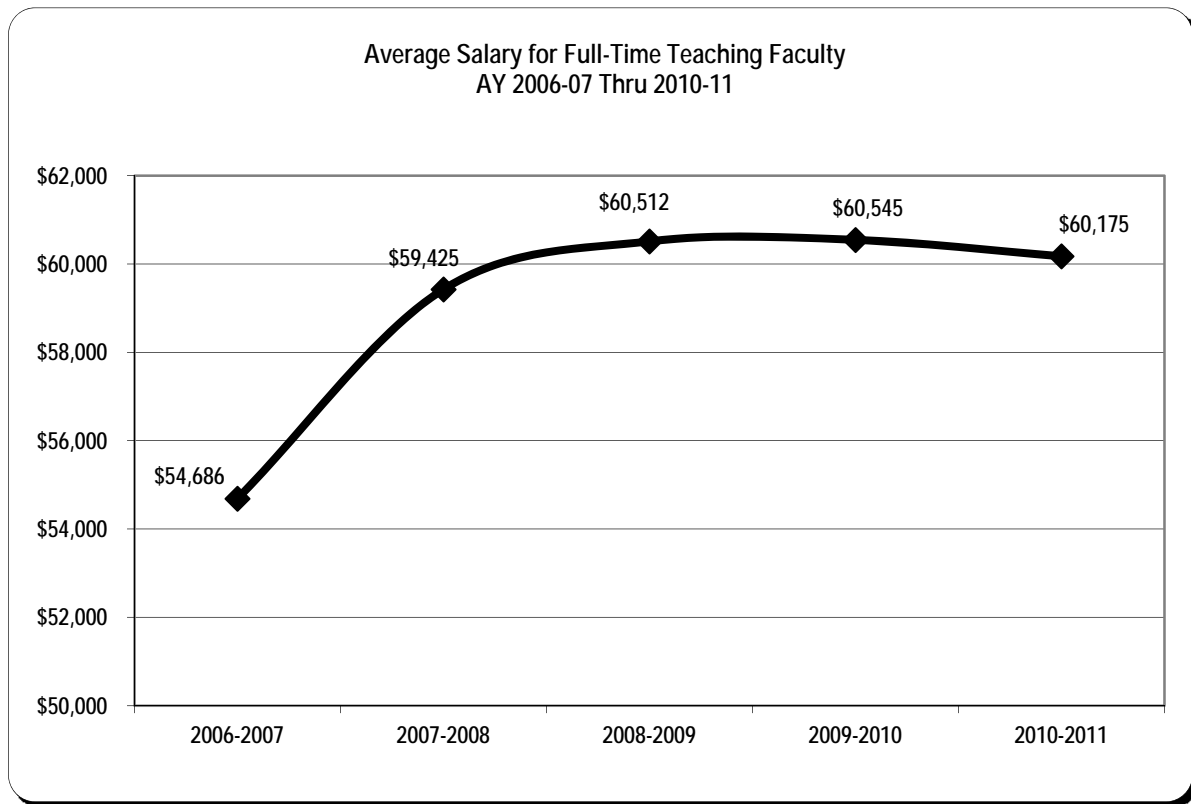
YEAR	NUMBER OF FULL-TIME FACULTY	NUMBER WITH TERMINAL DEGREE	PERCENT
Fall 2006	178	170	95.5%
Fall 2007	215	191	88.8%
Fall 2008	224	187	83.5%
Fall 2009	229	179	78.2%
Fall 2010	216	174	80.5%



Sources: CHEMIS Performance Indicators 2A2

**COMPARISON OF AVERAGE SALARY FOR FULL-TIME TEACHING FACULTY  
BY RANK  
ACADEMIC YEAR 2006-2007 THRU 2010-2011**

YEAR	PROFESSOR	ASSOCIATE PROFESSOR	ASSISTANT PROFESSOR	INSTRUCTOR	AVERAGE
2006-2007	\$66,193	\$60,283	\$51,137	\$38,968	<b>\$54,686</b>
2007-2008	\$72,648	\$64,220	\$54,963	\$42,550	<b>\$59,425</b>
2008-2009	\$74,043	\$64,714	\$57,758	\$43,715	<b>\$60,512</b>
2009-2010	\$72,119	\$64,026	\$58,245	\$45,473	<b>\$60,545</b>
2010-2011	\$73,647	\$62,805	\$57,603	\$44,437	<b>\$60,175</b>



Sources: IPEDS & CHEMIS Faculty Report

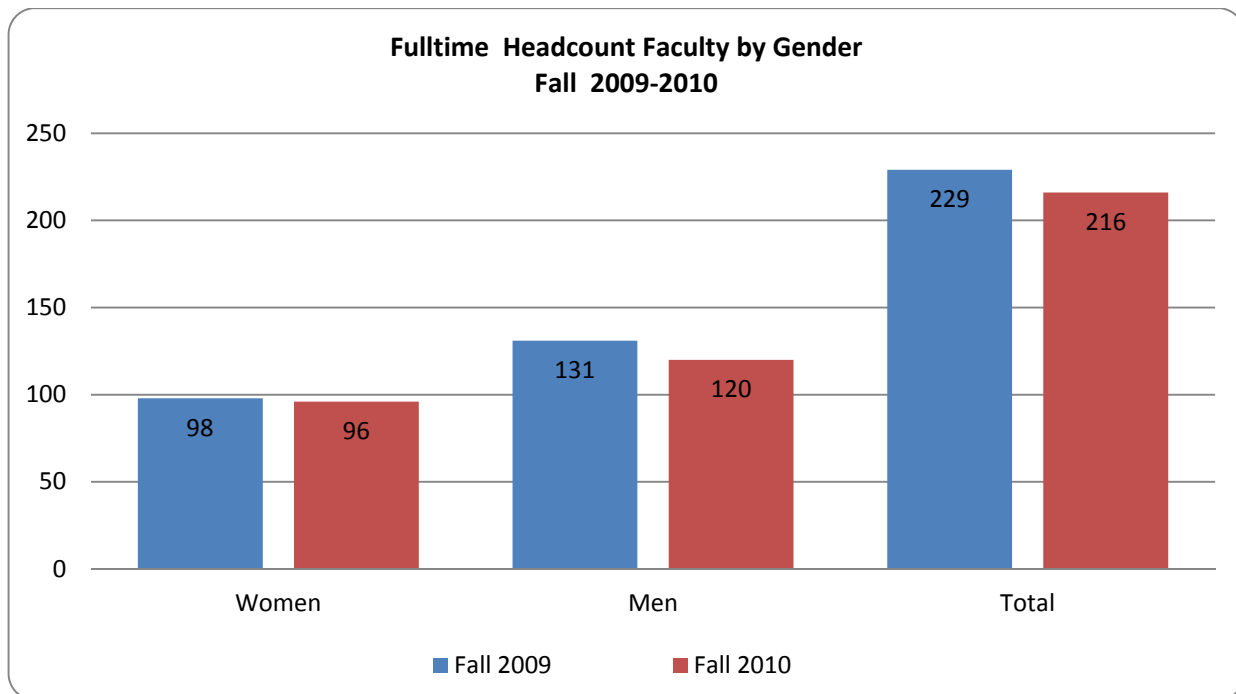
## FULL-TIME FACULTY BY RACE, GENDER, AND TENURE STATUS

### 2009 Full-Time Faculty by Race, Gender, and Tenure Status

	Black, Non-Hispanic		Asian/Pacific Islander		Hispanic		White, Non-Hispanic		Unknown		Total
	Women	Men	Women	Men	Women	Men	Women	Men	Women	Men	
<b>Not on Tenure Track</b>	8	7	0	1	0	0	2	3	0	0	<b>21</b>
<b>On-Tenure Track</b>	46	37	5	9	1	1	17	20	0	0	<b>136</b>
<b>Tenured</b>	15	29	1	8	0	0	3	16	0	0	<b>72</b>

### 2010 Full-Time Faculty by Race, Gender, and Tenure Status

	Black, Non-Hispanic		Asian/Pacific Islander		Hispanic		White, Non-Hispanic		American Indian		Total
	Women	Men	Women	Men	Women	Men	Women	Men	Women	Men	
<b>Not on Tenure Track</b>	23	13	1	3	0	0	1	11	0	1	<b>53</b>
<b>On-Tenure Track</b>	20	23	4	6	0	1	10	10	0	0	<b>74</b>
<b>Tenured</b>	27	27	2	8	0	0	8	17	0	0	<b>89</b>



Sources: 2009-2010 and 2010-2011 Employees as of November 1, of each year  
CHE Faculty Files

## Full-Time Staff by Salary Class and Gender

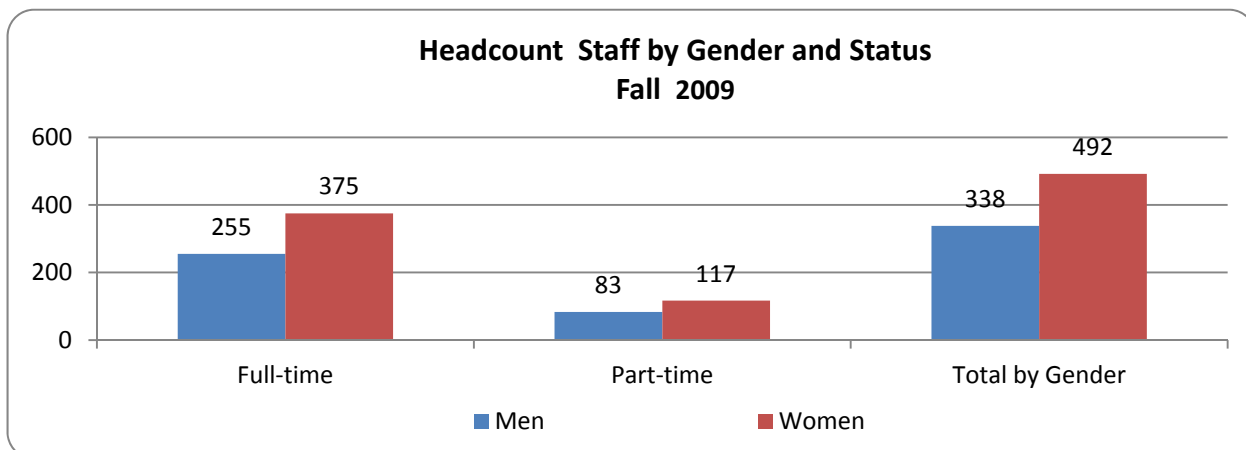
### 2009 Full-Time Staff by Salary Class and Gender

Salary Class	Men	Women	Total
Faculty	131	98	229
Executive Administrative/Managerial Staff	29	19	48
Primarily Public Service	6	5	11
Other Professionals (Support/service)	46	114	160
Technical and Paraprofessionals	17	13	30
Clerical and Secretarial	11	114	125
Skilled Crafts	7	0	7
Service/Maintenance	8	12	20
<b>Total</b>	<b>255</b>	<b>375</b>	<b>630</b>

## Part-Time Staff by Salary Class and Gender

### 2009 Part-Time Staff by Salary Class and Gender

Salary Class	Men	Women	Total
Part-Time Faculty	31	33	64
Executive Administrative/Managerial Staff	0	0	0
Other Professionals (Support/service)	20	33	53
Technical and Paraprofessionals	9	15	24
Clerical and Secretarial	6	20	26
Skilled Crafts	9	8	17
Service/Maintenance	8	8	16
<b>Total</b>	<b>83</b>	<b>117</b>	<b>200</b>



Source: 2009-2010 Human Resources Report to IPEDS as of November 1, 2009

## Full-Time Staff by Salary Class and Gender

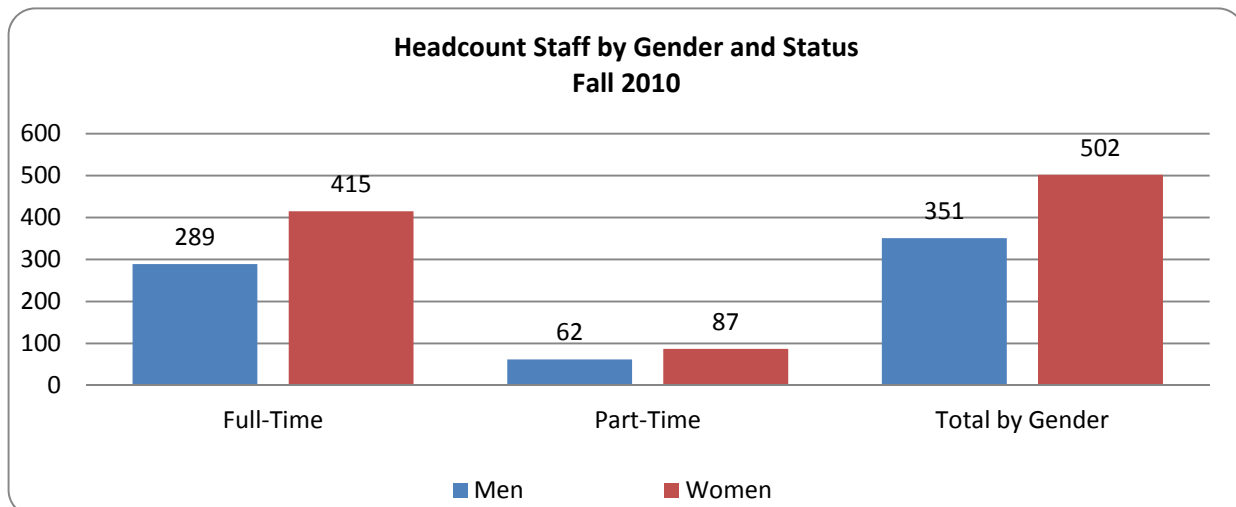
**2010 Full-Time Staff by Salary Class and Gender**

<b>Salary Class</b>	<b>Men</b>	<b>Women</b>	<b>Total</b>
Faculty	120	96	216
Executive Administrative/Managerial Staff	19	14	33
Other Professionals (Support/service)	118	203	321
Technical and Paraprofessionals	0	8	8
Clerical and Secretarial	6	88	94
Skilled Crafts	7	0	7
Service/Maintenance	19	6	25
<b>Total</b>	<b>289</b>	<b>415</b>	<b>704</b>

## Part-Time Staff by Salary Class and Gender

**2010 Part-Time Staff by Salary Class and Gender**

<b>Salary Class</b>	<b>Men</b>	<b>Women</b>	<b>Total</b>
Part-Time Faculty	34	34	68
Executive Administrative/Managerial Staff	0	2	2
Other Professionals (Support/service)	13	5	18
Technical and Paraprofessionals	3	14	17
Clerical and Secretarial	4	21	25
Skilled Crafts	2	6	8
Service/Maintenance	6	5	11
<b>Total</b>	<b>62</b>	<b>87</b>	<b>149</b>



Source: 2009-2010 Human Resources Report to IPEDS as of November 1, 2010

South Carolina State University Fact Book 2010-2011